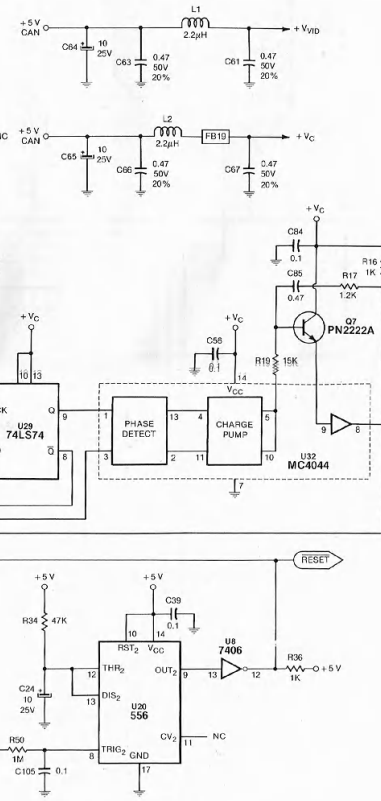
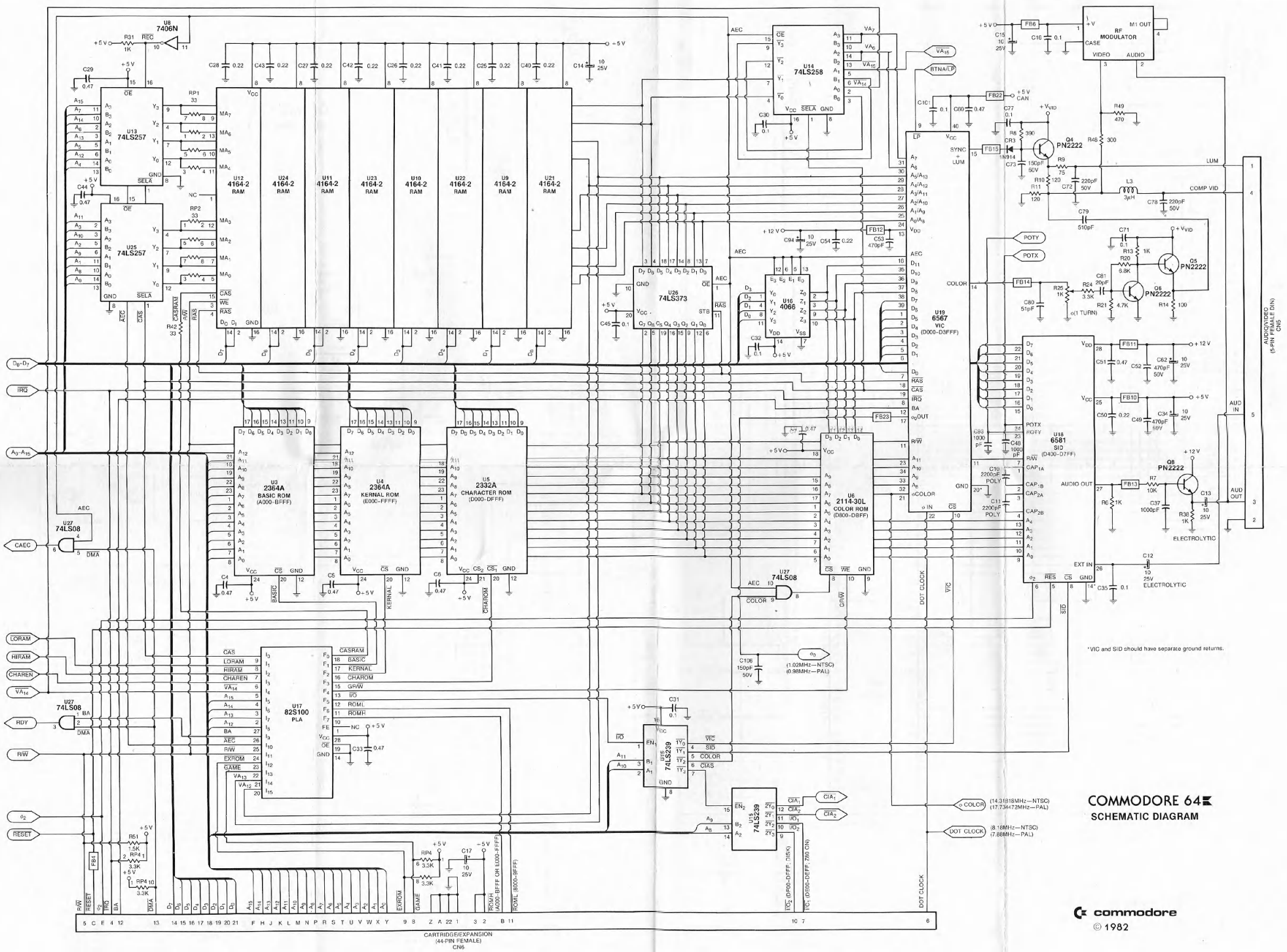


COMMODORE 64

SCHEMATIC DIAGRAM



Note:
 1. V_{CC} should be used to drive only devices indicated.
 2. Y1 = 14.31818 MHz—NITSC.
 3. All resistors are 1/4 watt ± 5% unless otherwise specified.
 4. All capacitor values are in μ F unless otherwise specified.



COMMODORE 64
SCHEMATIC DIAGRAM